

Nasal Helmet



from Kunsthistorisches Museum Wien,
Hofjagd- und Rüstkammer,
Vienna, Austria.

Note to the blacksmith:

The goal is to make a replica of the helmet from Vienna as accurate as possible. Although the measurement and degree of detail from the original are very accurate, the blacksmith is free to hit the target within the reasonable range.



Now that the helmet is made of a piece of metal, I do not know if it is possible nowadays to make the helmet with a difference in thickness. If possible, I think it would be good to be able to tell the story that the nasal piece varies a lot in thickness.

Information



Fig 01 - The exhibition from the Kunsthistorisches Museum Wien in Vienna.

Source type (A):

Archeological object.

Current location:

Kunsthistorisches Museum Wien, Hofjagd- und Rüstkammer, Vienna, Austria (A 41).

Website for object:

<https://www.khm.at/objektdb/detail/372805/>

Place of origin:

Olmütz, Mähren, Slovakia.

Dating:

1000s.

Measurement

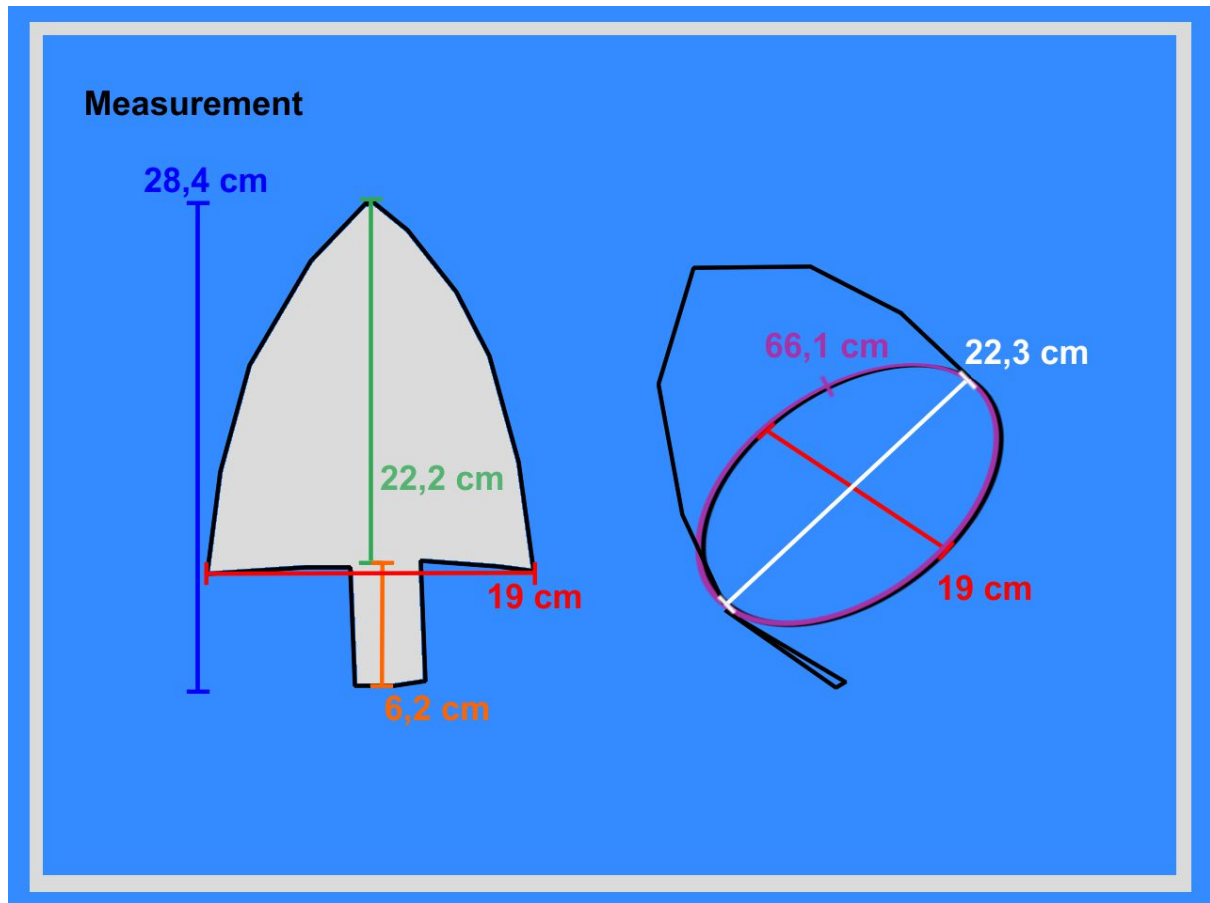


Fig. 02

Height with nasal (Fig 02: blue): 28,4 cm.

Height without nasal (Fig 02: green): 22,2 cm.

Height nasal: (Fig 02: orange): 6,2 cm.

Width (Fig 02: red): 19 cm.

Length (Fig 02: white): 22,3 cm.

Circumference (Fig 02: purple): 66,1 cm.

Details

Thickness:

The helmet is beaten out one piece, so the thickness can vary from about 0.17 to 0.20 centimeters (Fig. 03a). Remarkably, the nasal piece at the top is about 0.22 centimeters and at the bottom is about 0.14 centimeters. The nasal piece is therefore at the top (where it meets the helmet edge) the thickest place on the helmet, while at the bottom, at the hook, is the thinnest place on the helmet.

The back:

I'm not familiar with photos of the back of the helmet. But it is stated that the helmet is made of one single piece of metal without rivets.

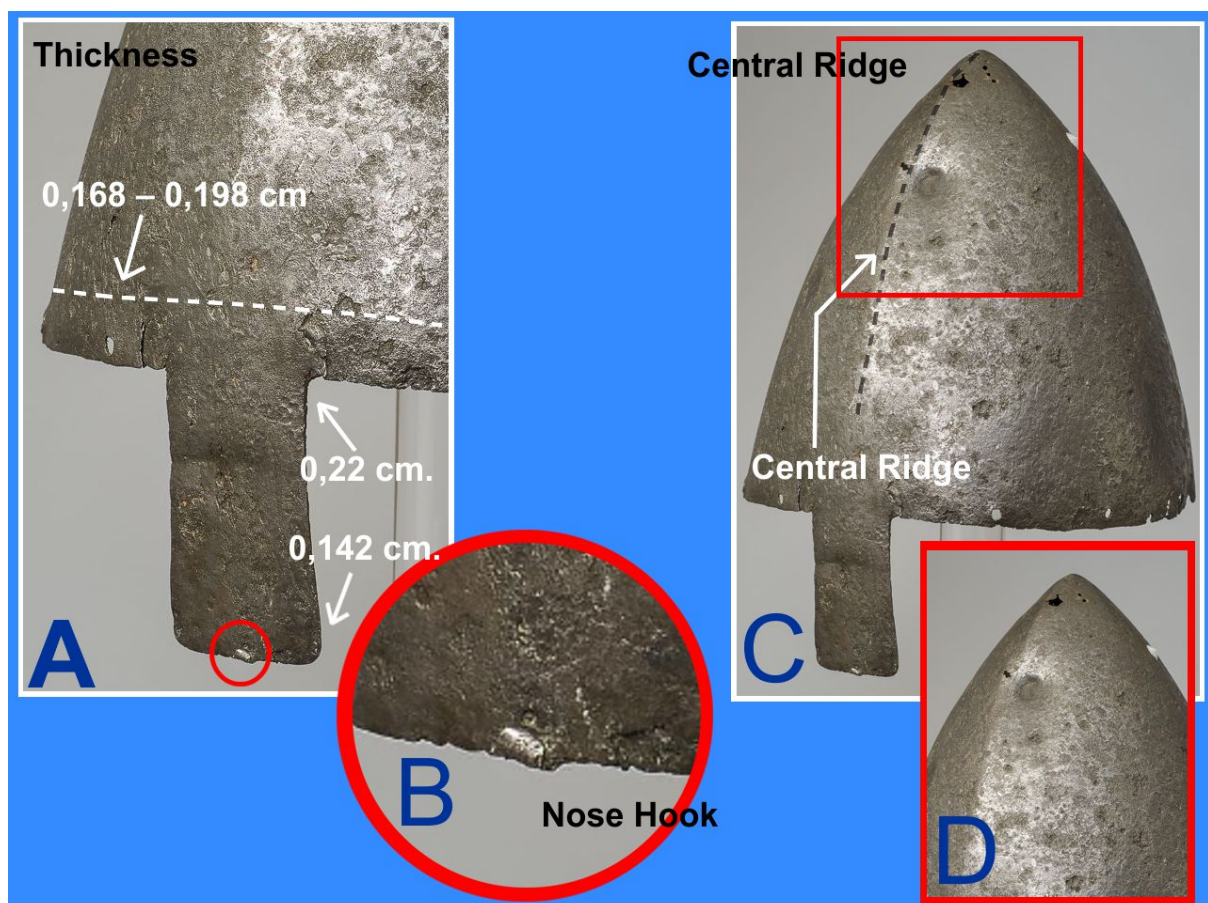


Fig. 03

Nose hook:

At the end of the nasal piece is made a tiny hook. It is not known what it was used for, but it is made of the same piece of metal as the rest of the helmet (Fig. 03b).

Central ridge:

On the front of the helmet from the top towards the nasal piece runs a central ridge (Fig. 03c & Fig.03d).

Holes:

12 holes about 0.4-0.5 cm., punched from inside.

Method:

It is mentioned that the helmet is made in one piece without rivets, forged and beaten out.

Photos



Fig.04



Fig. 05



Fig 06

Photos of details



Fig. 08 - Nasal



Fig. 09 - Nasal hook



Fig. 10 - holes punched from inside



Fig. 11 - Top with the central ridge

Thanks to David Stříbrný and thus Director Krause (from Kunsthistorisches Museum Wien) for sharing details and original measurements.

The information is collected by: Karsten Clausen (www.korsfarerne.dk)